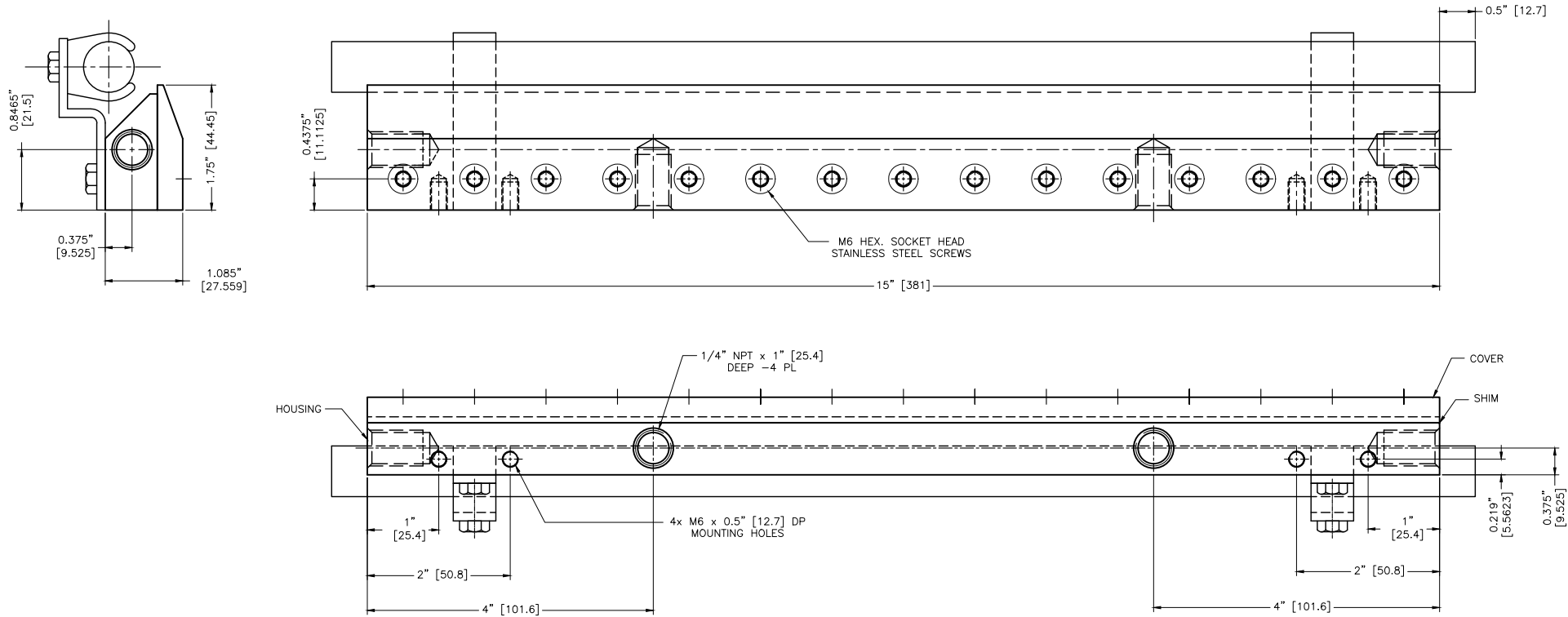


8 7 6 5 4 3 2 1

NOTES:

- 1 ALL DIMENSIONS SHOWN ARE FINISH OPERATIONAL DIMENSIONS WHICH INCLUDE RESIDUAL COATINGS UNLESS OTHERWISE SPECIFIED.
- 2 PART TO BE PACKED PROPERLY TO AVOID ANY DAMAGE WHILE SHIPPING & HANDLING.
- 3 ALL HORIZONTAL DIMENSIONS ARE SYMMETRICAL ABOUT CENTER LINE UNLESS OTHERWISE SPECIFIED.



THIRD ANGLE PROJECTION		REQUIREMENTS—UNLESS OTHERWISE SPECIFIED				CONTRACT NUMBER	NEX FLOW AIR PRODUCTS CORP.						
		GENERAL				CLIENT	10520 YONGE STREET, UNIT 358-220, RICHMOND HILL, ON L4C 3C7						
MATERIAL	ALUMINIUM	1. DIMS ARE IN INCHES (MM)				CONTRACTOR	TEL.: (416) 410-1313 & FAX: (416) 410-1806 www.nex-flow.com						
		2. DIMENSIONING AND TOLERANCING IN ACCORDANCE WITH ANSI Y14.5 (1982)				DRAWN	TITLE						
FINISH	-	3. MACHINE FINISH 125 MICRO INCH RMS				DATE	OUTLINE DRAWING OF						
		4. INTERNAL RADII .015				DESIGN	15" X-STREAM AIR BLADE AIR KNIFE						
		5. BREAK SHARP CORNERS .005 TO .015				PROJECT	WITH IONIZER						
		LIMITS				STRESS	MANUFACTURING	SIZE	CAGE CODE	DWG NO	RELEASE	REV	
		1. LINEAR DIMS				MECHANISM	ELECTRICAL	SCALE	1:1	CAD NO	XAKI-15	SHEET	1 OF 1
		.00X = .005											
		.01X = .010											
		.02X = .020											
		2. ANGLES = ± 1/2"											
		3. RUNOUT .010 THR											
		4. HOLES IN ACCORDANCE WITH AND 10387											
		PART NO											

8 7 6 5 4 3 2 1