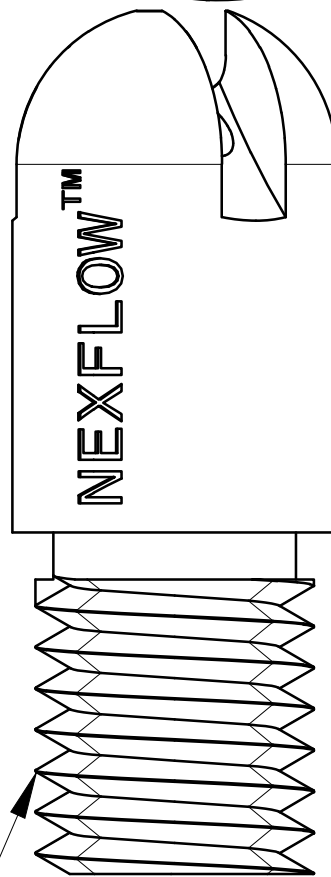
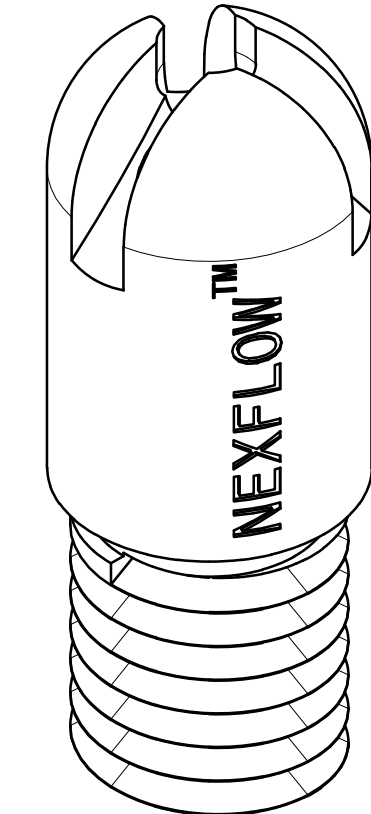
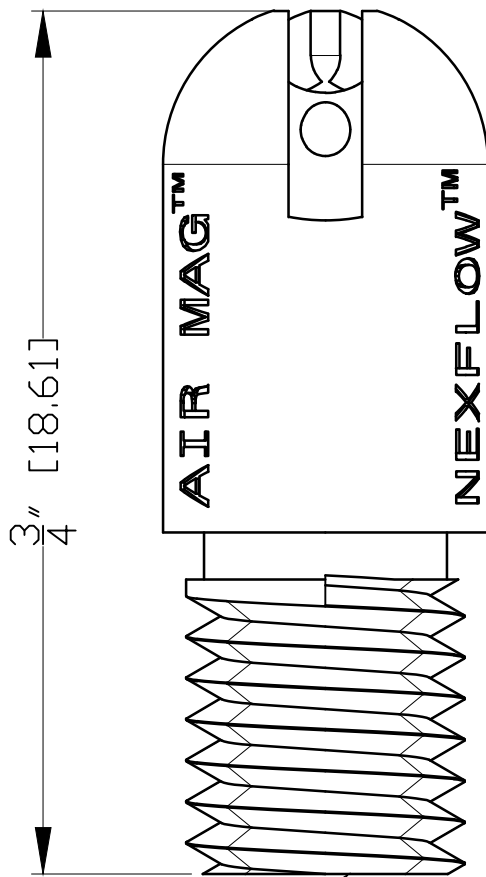
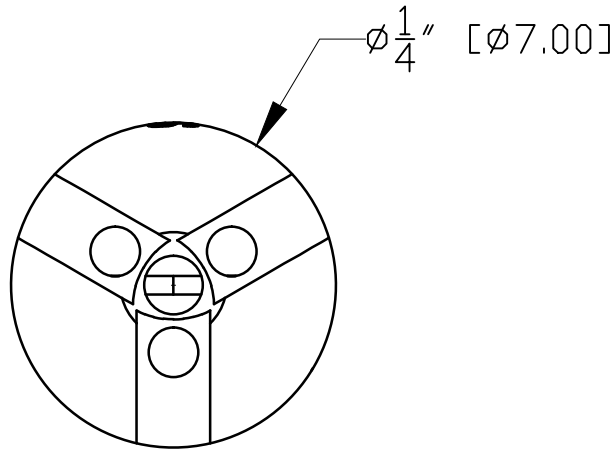


NOTES:

- 1 ALL DIMENSIONS SHOWN ARE IN INCHES (MM)
- 2 ALL DIMENSIONS SHOWN ARE FINISH OPERATIONAL DIMENSIONS WHICH INCLUDE RESIDUAL COATINGS UNLESS OTHERWISE SPECIFIED.
- 3 PART TO BE FLAT PACKED PROPERLY TO AVOID ANY DAMAGE WHILE SHIPPING & HANDLING.
- 4 ALL HORIZONTAL DIMENSIONS ARE SYMMETRICAL ABOUT VERTICAL CENTER LINE UNLESS OTHERWISE SPECIFIED.



AIR INLET

M6 THRD.

THIRD ANGLE PROJECTION		REQUIREMENTS—UNLESS OTHERWISE SPECIFIED		CONTRACT NUMBER —		NEX FLOW AIR PRODUCTS CORP. 10520 YONGE STREET, UNIT 35B—220, RICHMOND HILL, ON L4C 3C7 TEL: (416) 410-1313 & FAX: (416) 410-1806 www.nex-flow.com							
		GENERAL		CLIENT —									
MATERIAL	SS—316L	1. DIMS ARE IN INCHES (MM)		CONTRACTOR —		TITLE M6 AIR MAG™ NOZZLE							
		2. DIMENSIONING AND TOLERANCING IN ACCORDANCE WITH ANSI Y14.5 (1982)		DRAWN CHIRAG.S								DATE 01/01/2016	
		3. MACHINE FINISH 125 MICRO INCH RMS		DESIGN —								CHECKED ASHISH	
		4. INTERNAL RADII .015		—								G.A. —	
FINISH	—	5. BREAK SHARP CORNERS .005 TO .015		PROJECT —		SIZE — CAGE CODE — PART NAME 47002 AMS RELEASE — REV —							
		LIMITS		STRESS —									
		1. LINEAR DIMS.		MANUFACTURING —									
		.00X = .005		—									
		.0X = .010		THERMAL —									
		X = .030		—									
		2. ANGLES = ± 1/2°		MECHANISM —									
		3. RUNOUT .010 TIR		ELECTRICAL									
		4. HOLES IN ACCORDANCE WITH AND 10387		SCALE 1:1									
				CAD NO									
				SHEET 1 OF 1									