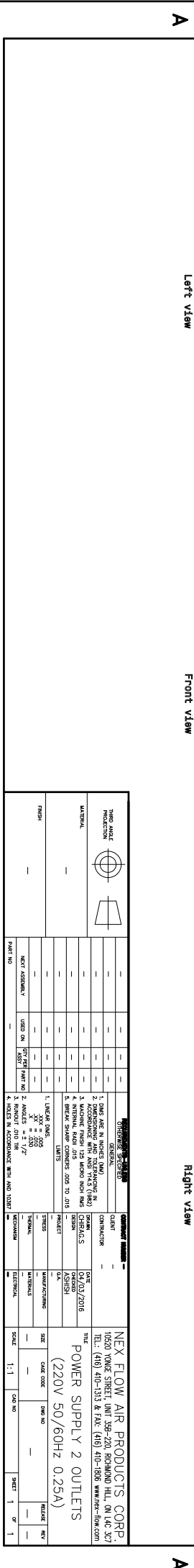
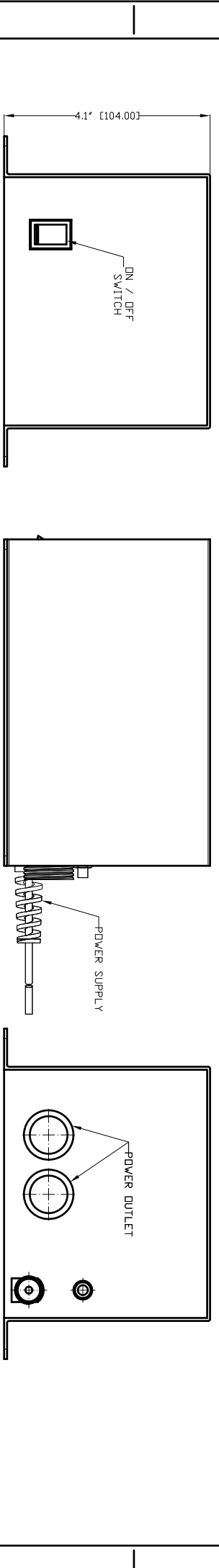
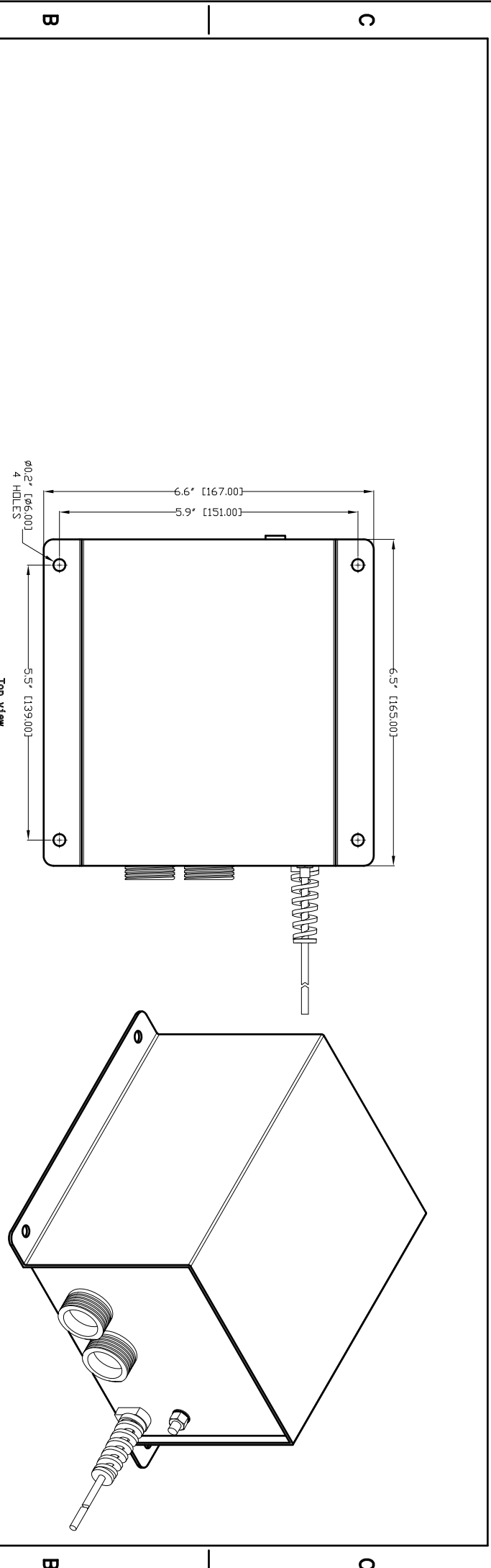


5 4 3 2 1



REVISIONS 1. UNLESS SHOWN OTHERWISE, ALL DIMENSIONS ARE IN INCHES (PARENS) UNLESS OTHERWISE SPECIFIED. 2. DIMENSIONS ARE TO CENTER UNLESS OTHERWISE SPECIFIED. 3. DIMENSIONS ARE TO CENTER UNLESS OTHERWISE SPECIFIED. 4. DIMENSIONS ARE TO CENTER UNLESS OTHERWISE SPECIFIED. 5. BREAK SHOWN CORRESPOND TO 2D10.		CLIENT: — CONTRACTOR: — DESIGNER: — CHECKER: — DATE: — SCALE: 1:1 SHEET: 1 OF 1
GENERAL 1. UNLESS SHOWN OTHERWISE, ALL DIMENSIONS ARE IN INCHES (PARENS) UNLESS OTHERWISE SPECIFIED. 2. DIMENSIONS ARE TO CENTER UNLESS OTHERWISE SPECIFIED. 3. DIMENSIONS ARE TO CENTER UNLESS OTHERWISE SPECIFIED. 4. DIMENSIONS ARE TO CENTER UNLESS OTHERWISE SPECIFIED. 5. BREAK SHOWN CORRESPOND TO 2D10.		MANUFACTURER: — MATERIALS: — FINISH: — PART NO.: — USED ON: — DATE: —
GENERAL 1. UNLESS SHOWN OTHERWISE, ALL DIMENSIONS ARE IN INCHES (PARENS) UNLESS OTHERWISE SPECIFIED. 2. DIMENSIONS ARE TO CENTER UNLESS OTHERWISE SPECIFIED. 3. DIMENSIONS ARE TO CENTER UNLESS OTHERWISE SPECIFIED. 4. DIMENSIONS ARE TO CENTER UNLESS OTHERWISE SPECIFIED. 5. BREAK SHOWN CORRESPOND TO 2D10.		NEX FLOW AIR PRODUCTS CORP. 10520 YONKE STREET, UNIT 350-220 RICHMOND HILL, ON L4C 3J7 TEL: (416) 410-5113 & FAX: (416) 410-1806 WWW.NFA-HP.COM THE POWER SUPPLY 2 OUTLETS (220V 50/60Hz 0.25A)

5 4 3 2 1