

STREAM VAC®

**Dust Collection and Fume Extraction system for spot applications –
portable, low cost, maintenance free**

WHAT ARE THEY - REASONS TO USE

The versatile and affordable compact air cleaning system is ideal for the removal of fumes, dust and other air pollution from work stations without the need for heavy and bulky machinery. The **Nex Flow® Stream Vac®** is an in line air conveyor that when hooked up to a 2" hose and connected to a compressed air line, it will remove up to several hundred cubic feet of air while using only a minimal amount of compressed air, taking with it welding fumes, soldering fumes, particulate from local grinding operations, smoke and particulate from almost any "spot" application.

A safe and improved healthy condition in the workplace improves employee morale, increases worker productivity, decreases absenteeism and even reduces insurance costs in many cases. A cleaner environment can even enhance the performance of machinery and sometimes cut maintenance costs. However, until now there was no low cost solution to enhance the environment.

The low cost, compact and portable, the unit operates utilizing a minimal amount of compressed air. It comes with a magnetic stand to "plug into position" on any magnet accepting metal surface. Simply connect the snap – on collection attachments and clamp a 2" hose on the opposite side, hook up your compressed air and you are set to go.



STREAM VAC® FEATURES:

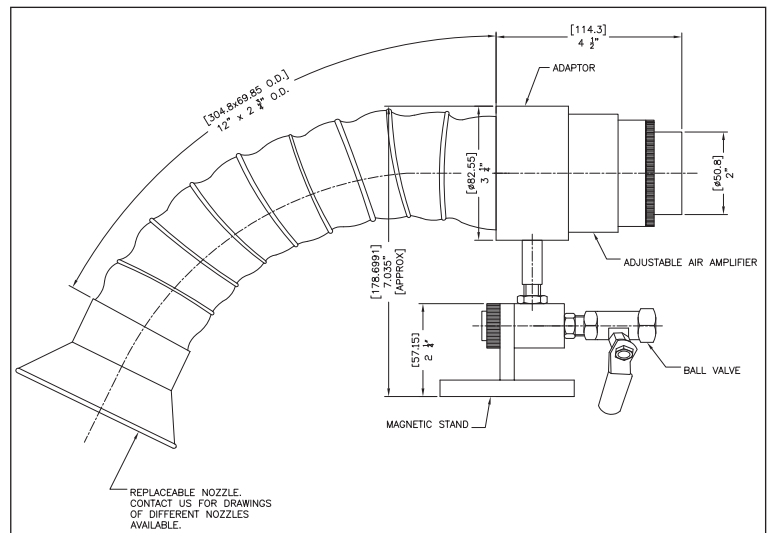
- ▶ No moving parts.
- ▶ Driven by air not electricity.
- ▶ Compact and portable - easy to install.

STREAM VAC® BENEFITS:

- ▶ Maintenance Free
- ▶ Safe – no electricity
- ▶ Simple to install and use – portable

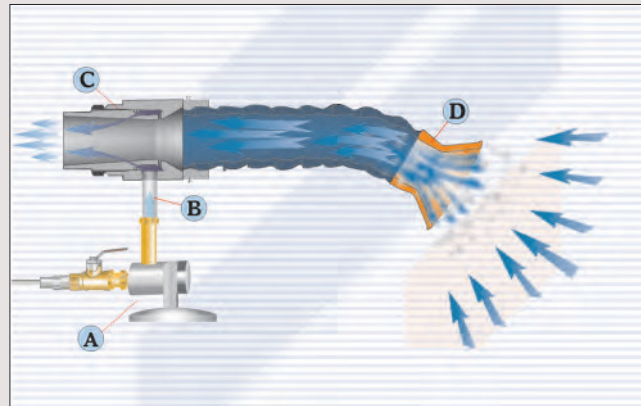


↑ Stream Vac® removing soldering fumes from a circuit board soldering station



STREAM VAC® - HOW IT WORKS:

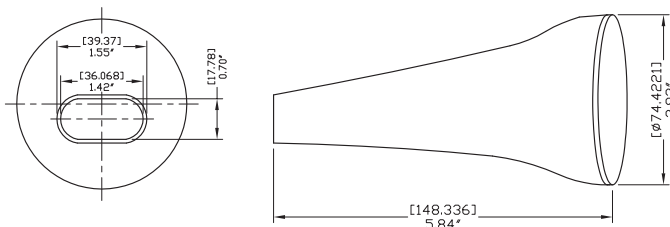
The Stream Vac® is used for the removal of fumes, smoke, dust and particulate at any workbench location with a base that will support the strong magnetic "swivel" base (A) for flexible position of the system. Compressed air is piped in at point (B) on the air amplifier (which is also adjustable to control the suction). Fumes, smoke and particulate enter at (C) and a 2" hose (Customer supplied) at (D) takes the material to a safe location. Three different suction attachments are available. Manual shutoff valve included.



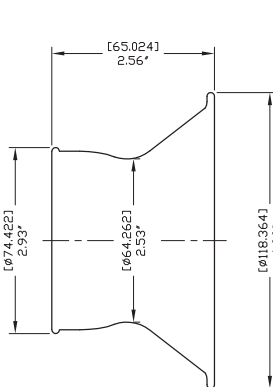
SPECIFICATIONS:

The Stream Vac® uses only 20 SCFM (567 SLPM) at 80 PSIG (5.5 bar) yet will move up to 16 times that volume of air drawing in fumes, dust, smoke and particulate. Standard inlet is 3/8" NPT. Clean, dry air is recommended and an optional filter with automatic drain is available. Three types of suction attachments are supplied in the package which has a strong magnetic base to secure its position.

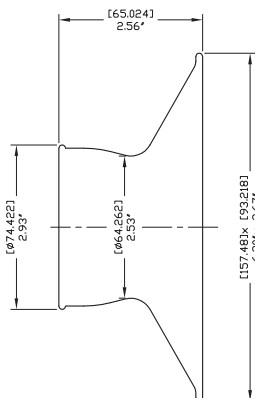
The Stream Vac® includes a Model 40002 adjustable air amplifier, magnetic base, manual shutoff valve, all attachments and fittings, and three inlet attachments: round nozzle, rectangular nozzle and tapered oval nozzle.



58884 - TAPERED NOZZLE



58882 - ROUND NOZZLE



58883 - RECTANGULAR NOZZLE

PART NO.	DESCRIPTION
40002FMS	Stream Vac® fume removal system c/w magnetic swivel base, assembly, and hose kit
90004	Filter with auto drain
90005	Oil Removal filter with auto drain



Stream Vac® used on manufacturing line to remove welding fumes.

X-STREAM® HAND VAC

Use as a Blow Gun or as A Vacuum to Clean or Transfer Solid Material with no moving parts.

WHAT ARE THEY - REASONS TO USE

The **X-Stream® hand vac** is the low cost solution to a variety of industrial housekeeping applications. It is a blow gun, a vacuum gun, a collection system and a transfer system in one simple package.

The **X-Stream® hand vac** is light weight die cast aluminum and uses less air than a normal blow gun. The amplified air flow is approximately 12 times the air consumption. It draws a vacuum at one end to produce a high vacuum for collection or transfer of materials. It is easily converted from a blow gun into a vacuum gun and back again.

In blowoff mode, the 1-1/4" (32 mm) diameter allows it to cover a much greater area than a small blow gun for faster cleaning and drying. It can also be used to transfer material over a long distance using a vacuum hose which can be supplied. In vacuum mode, it can be used to vacuum up debris if more appropriate than blowing air, and debris can be collected in an available reusable vacuum bag.

X-STREAM® HAND VAC FEATURES:

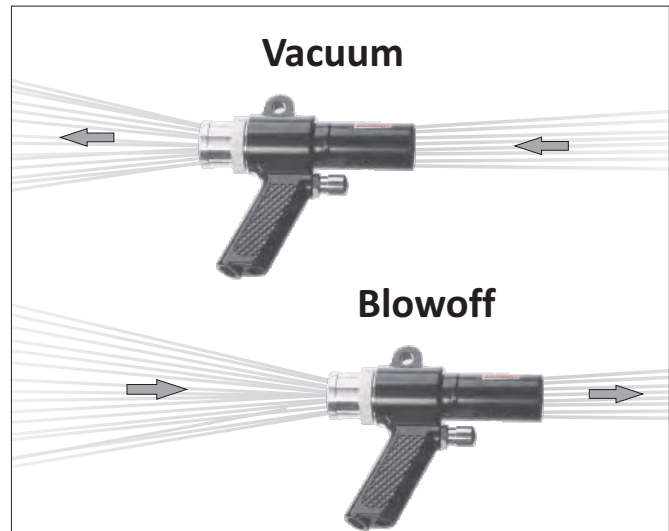
- No moving parts.
- Driven by air not electricity.
- Die Cast construction.
- Can switch from blowoff mode to vacuum in seconds
- Lightweight and portable

X-STREAM® HAND VAC BENEFITS:

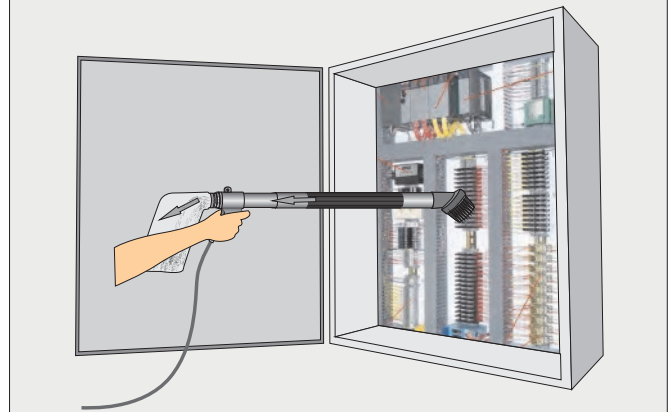
- Maintenance Free
- Safe and Long life
- Durable
- Flexible in use - vacuum or blowoff
- Ergonomic - comfortable to use

APPLICATIONS:

- Clean machinery and controls
- Blowoff coolant, water, chips, scrap
- Vacuum sawdust and solid spills, shavings, waste
- Transfer small parts, trim, materials



Model 36011 Hand Vac collection system is used to clean & collect dust & dirt from inside a Control Panel.

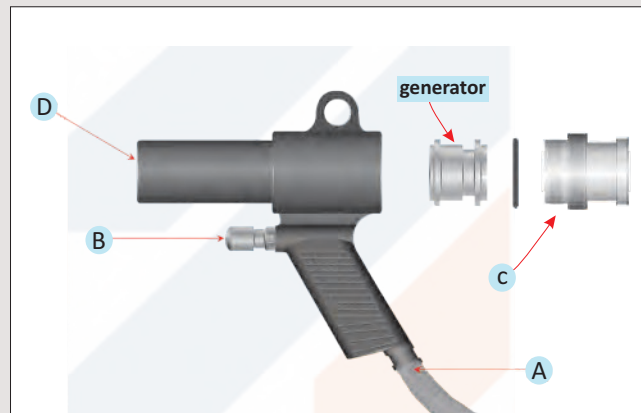


Model 36012 transfer system is used to move ball bearings from a bucket to a storage drum.



X-STREAM® HAND VAC - HOW IT WORKS

X-Stream® Hand Vac - Compressed air enters at point (A) and is allowed to flow into the Hand Vac using the trigger at point (B). Air either exits at point (C) for blow off or point (C) is a vacuum depending on the setup of the generator inside the Hand Vac. Similarly at point (D), air either enters (in blow off mode) or exits (vacuum mode). The generator inside can be reversed to change mode from blow off to vacuum and back again as required.



IN BLOW MODE THE X-STREAM® HAND VAC CONSUMES LESS AIR THAN ORDINARY BLOW GUNS

SPECIFICATIONS:

The X-Stream® Hand Vac uses only 13 SCFM (368 SLPM) at 80 PSIG (5.5 Bar) to produce a vacuum of - 29.5 inches water (-7 kPa) and produces a force of 9 ounces (255 grams). Standard inlet is ¼" NPT

X-STREAM® HAND VAC

PART NO.	DESCRIPTION
36011	X-Stream® Hand-Vac collection system
36012	X-Stream® Hand-Vac transfer system
36013	X-Stream® Hand-Vac all purpose system
36001	X-Stream® Hand-Vac only

ACCESSORIES

PART NO.	DESCRIPTION
90001	Filter with auto drain
90005	Oil removal filter with auto drain



Model 36011 - Collection System consists of X-stream™ hand vac plus reusable collection bag, cleaning brush, crevice tool, skimmer tool, two extension wands, and stainless steel hose clamp



Model 36012 - Transfer System consists of X-stream™ hand vac plus 10 foot (3 m) vacuum hose with cuffs at both ends, cleaning brush, crevice tool, skimmer tool, two extension wands, and stainless steel hose clamp



Model 36013 - All Purpose System consists of X-stream™ hand vac plus 10 foot (3 m) vacuum hose with cuffs at both ends, reusable collection bag, cleaning brush, crevice tool, skimmer tool, two extension wands, and stainless steel hose clamp.

BLOW DIRT, CHIPS, SCRAP OUT OF DEEP BLIND HOLES IN ONE EASY STEP THAT REALLY WORKS!! IDEAL FOR CLEANING DRILLED HOLES AND DEEP CAVITIES. CAN CLEAN HOLES AS BIG AS 1" (25 mm) DIAMETER AND AS DEEP AS 20 inches (525 mm).

WHAT ARE THEY - REASONS TO USE



Unlike make shift vacuum type systems that are cumbersome and do not always work well, the **X-STREAM® BLIND HOLE CLEANING SYSTEM** actually works and is specifically designed to remove dirt, debris, chips and scrap from drilled holes, deep containers, and grooves -1" diameter to 20" deep!. Only uses 11 SCFM at 80 PSIG for more shallow holes and only 20 SCFM for very deep holes! The **X-STREAM® BLIND HOLE CLEANING SYSTEM** is ideal for blowing out and collecting chips, contaminants and debris from deep containers, drilled holes and grooves whereas blow guns can create a potentially hazardous situation with flying debris. The **X-STREAM® BLIND HOLE CLEANING SYSTEM** creates the ideal blow-off force once the hole adaptor is flush with the hole directing the unit in such a way to dislodge and direct all the debris into the collection bag. All dirt and debris are contained within the unit as it is passed into the reusable collection bag, protecting the operator from any contaminants.

X-STREAM® BLIND HOLE CLEANING SYSTEM FEATURES

- No moving parts
- Driven by air and not electricity
- Aluminum cast construction
- Lightweight and portable
- Various packages available depending on hole diameter & depth
- Custom designs available

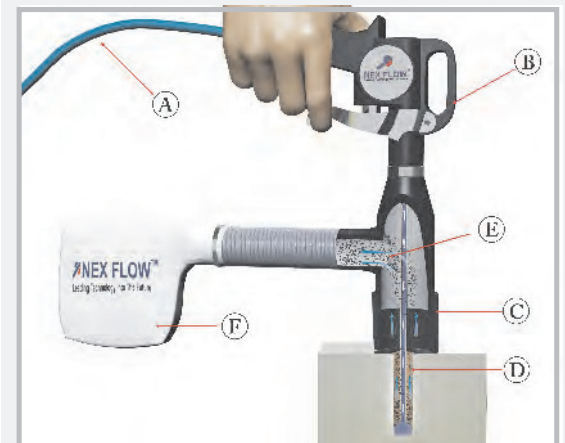
X-STREAM® BLIND HOLE CLEANING SYSTEM BENEFITS

- Maintenance Free
- Safe when used as directed
- Long Life
- Durable
- Ergonomic
- No Electricity so no shock hazard
- Low Air consumption



X-STREAM® BLIND HOLE CLEANING SYSTEM HOW IT WORKS

The **X-STREAM® BLIND HOLE CLEANING SYSTEM** comes complete with hose clamp and material collection bag (F), connected to the Cleaning Gun (B) using a plastic hose connection. Compressed air is supplied into the unit via the customers air hose (A). The replaceable hole adaptor (E) is connected to the Cleaning Gun. Simply place the hole adaptor (C) over the slot, or hole or container to completely cover the hole. Press the handle on the Cleaning Gun to blow compressed air into the slot, hole or container via the nozzle (D) to remove the debris. Once the bag is filled, remove the bag with the hose clamp, clean and replace



BLIND HOLE CLEANING SYSTEM — comes complete with Cleaning Gun, Aluminum cast Hole adaptor, nozzle, collection bag c/w hose clamp and plastic hose connection

PART NO.	DESCRIPTION
48104-16-00	Blind Hole Cleaning System for Max. Hole Dia. of 16 mm and hole depth of 50 mm.
48104-16-15	Blind Hole Cleaning System for Max. Hole Dia. of 16 mm and hole depth of 50 mm.
48104-20-15	Blind Hole Cleaning System for Max. Hole Dia. of 20 mm and hole depth of 50 mm.
48104-25-15	Blind Hole Cleaning System for Max. Hole Dia. of 25 mm and hole depth of 50 mm.
48104-16-75	Blind Hole Cleaning System for Max. Hole Dia. of 16 mm and hole depth of 90 mm.
48104-20-75	Blind Hole Cleaning System for Max. Hole Dia. of 20 mm and hole depth of 90 mm.
48104-25-75	Blind Hole Cleaning System for Max. Hole Dia. of 25 mm and hole depth of 90 mm.
48104-16-150	Blind Hole Cleaning System for Max. Hole Dia. of 16 mm and hole depth of 165 mm.
48104-20-150	Blind Hole Cleaning System for Max. Hole Dia. of 20 mm and hole depth of 165 mm.
48104-25-150	Blind Hole Cleaning System for Max. Hole Dia. of 25 mm and hole depth of 165 mm.
48104-16-230	Blind Hole Cleaning System for Max. Hole Dia. of 16 mm and hole depth of 245 mm.
48104-20-230	Blind Hole Cleaning System for Max. Hole Dia. of 20 mm and hole depth of 245mm.
48104-25-230	Blind Hole Cleaning System for Max. Hole Dia. of 25 mm and hole depth of 245 mm.
48104-16-300	Blind Hole Cleaning System for Max. Hole Dia. of 16 mm and hole depth of 315 mm.
48104-20-300	Blind Hole Cleaning System for Max. Hole Dia. of 20 mm and hole depth of 315 mm.
48104-25-300	Blind Hole Cleaning System for Max. Hole Dia. of 25 mm and hole depth of 315 mm.
48104-16-375	Blind Hole Cleaning System for Max. Hole Dia. of 16 mm and hole depth of 390 mm.
48104-20-375	Blind Hole Cleaning System for Max. Hole Dia. of 20 mm and hole depth of 390 mm.
48104-25-375	Blind Hole Cleaning System for Max. Hole Dia. of 25 mm and hole depth of 390 mm.
48104-16-450	Blind Hole Cleaning System for Max. Hole Dia. of 16 mm and hole depth of 465 mm.
48104-20-450	Blind Hole Cleaning System for Max. Hole Dia. of 20 mm and hole depth of 465 mm.
48104-25-450	Blind Hole Cleaning System for Max. Hole Dia. of 25 mm and hole depth of 465 mm.
48104-16-510	Blind Hole Cleaning System for Max. Hole Dia. of 16 mm and hole depth of 525 mm.
48104-20-510	Blind Hole Cleaning System for Max. Hole Dia. of 20 mm and hole depth of 525 mm.
48104-25-510	Blind Hole Cleaning System for Max. Hole Dia. of 25 mm and hole depth of 525 mm.

MODEL	DESCRIPTION
48105	Blind Hole Cleaning System Kit with all Hole Adaptors and Nozzles plus Water Removal Filter c/w auto drain

ACCESSORIES

MODEL	DESCRIPTION
90004	Water Removal Filter c/w Auto Drain
90005	Oil Removal Filter c/w Auto Drain



BLIND HOLE CLEANING COMPONENTS

48102-16	Blind Hole Gun c/w Adaptor for Maximum Hole Diameter of 16 mm – no nozzles
48102-20	Blind Hole Gun c/w Adaptor for Maximum Hole Diameter of 20 mm – no nozzles
48102-25	Blind Hole Gun c/w Adaptor for Maximum Hole Diameter of 25 mm – no nozzles
48100-16	Adaptor Only for Maximum Hole Diameter of 16 mm
48100-20	Adaptor Only for Maximum Hole Diameter of 20 mm
48100-25	Adaptor Only for Maximum Hole Diameter of 25 mm

NOTE: All Standard nozzles below are for minimum inside diameter holes of 7 mm. Special small nozzles for smaller holes and other non-standard cavities available on request.

48103-00	Recessed nozzle for very small diameter holes to depth of 50 mm.
48103-15	Nozzle Length - 15 mm for hole depth up to 50 mm (11 SCFM @80 PSIG)
48103-75	Nozzle Length - 75 mm for hole depth up to 90 mm (20 SCFM @80 PSIG)
48103-150	Nozzle Length - 150 mm for hole depth up to 165 mm (20 SCFM @80 PSIG)
48103-230	Nozzle Length - 230 mm for hole depth up to 245 mm (20 SCFM @80 PSIG)
48103-300	Nozzle Length - 300 mm for hole depth up to 315 mm (20 SCFM @80 PSIG)
48103-375	Nozzle Length - 375 mm for hole depth up to 390 mm (20 SCFM @80 PSIG)
48103-450	Nozzle Length - 450 mm for hole depth up to 465 mm (20 SCFM @80 PSIG)
48103-510	Nozzle Length - 510 mm for hole depth up to 525 mm (20 SCFM @80 PSIG)
48104-0	Bag with plastic hose and Stainless Steel hose clamp

Blind Hole Cleaning System for Automated Systems (non-manual)

Blind Hole Automated Cleaning System is used on machine everywhere an automated cleaning device is preferred over manual operation for cleaning a blind hole. Instead of using the air supply gun in manual cleaning operations, these systems utilize the main attachment with the appropriate adapter for the holediameter. The same nozzles as used in the manual systems areutilized. Compressed air is supplied directly tothe unit and turned on/off as the customer desires in their design using appropriate times, sensors and solenoidvalves. Nex Flow® can assist in this area with accessories and design for a nominal additional cost should the customer require assistance.



Blind Hole Cleaning System for Automated Systems (non-manual)

PART NO.	DESCRIPTION
48105-16-00	Automated Blind Hole Cleaning System for Max. Hole Dia. of 16 mm. and hole depth of 50 mm.
48105-16-15	Automated Blind Hole Cleaning System for Max. Hole Dia. of 16 mm. and hole depth of 50 mm.
48105-20-15	Automated Blind Hole Cleaning System for Max. Hole Dia. of 20 mm. and hole depth of 50 mm.
48105-25-15	Automated Blind Hole Cleaning System for Max. Hole Dia. of 25 mm. and hole depth of 50 mm.
48105-16-75	Automated Blind Hole Cleaning System for Max. Hole Dia. of 16 mm. and hole depth of 90 mm.
48105-20-75	Automated Blind Hole Cleaning System for Max. Hole Dia. of 20 mm. and hole depth of 90 mm.
48105-25-75	Automated Blind Hole Cleaning System for Max. Hole Dia. of 25 mm. and hole depth of 90 mm.
48105-16-150	Automated Blind Hole Cleaning System for Max. Hole Dia. of 16 mm. and hole depth of 165 mm.
48105-20-150	Automated Blind Hole Cleaning System for Max. Hole Dia. of 20 mm. and hole depth of 165 mm.
48105-25-150	Automated Blind Hole Cleaning System for Max. Hole Dia. of 25 mm. and hole depth of 165 mm.
48105-16-230	Automated Blind Hole Cleaning System for Max. Hole Dia. of 16 mm. and hole depth of 245 mm.
48105-20-230	Automated Blind Hole Cleaning System for Max. Hole Dia. of 20 mm. and hole depth of 245 mm.
48105-25-230	Automated Blind Hole Cleaning System for Max. Hole Dia. of 25 mm. and hole depth of 245 mm.
48105-16-300	Automated Blind Hole Cleaning System for Max. Hole Dia. of 16 mm. and hole depth of 315 mm.
48105-20-300	Automated Blind Hole Cleaning System for Max. Hole Dia. of 20 mm. and hole depth of 315 mm.
48105-25-300	Automated Blind Hole Cleaning System for Max. Hole Dia. of 25 mm. and hole depth of 315 mm.
48105-16-375	Automated Blind Hole Cleaning System for Max. Hole Dia. of 16 mm. and hole depth of 390 mm.
48105-20-375	Automated Blind Hole Cleaning System for Max. Hole Dia. of 20 mm. and hole depth of 390 mm.
48105-25-375	Automated Blind Hole Cleaning System for Max. Hole Dia. of 25 mm. and hole depth of 390 mm.
48105-16-450	Automated Blind Hole Cleaning System for Max. Hole Dia. of 16 mm. and hole depth of 465 mm.
48105-20-450	Automated Blind Hole Cleaning System for Max. Hole Dia. of 20 mm. and hole depth of 465 mm.
48105-25-450	Automated Blind Hole Cleaning System for Max. Hole Dia. of 25 mm. and hole depth of 465 mm.
48105-16-510	Automated Blind Hole Cleaning System for Max. Hole Dia. of 16 mm. and hole depth of 525 mm.
48105-20-510	Automated Blind Hole Cleaning System for Max. Hole Dia. of 20 mm. and hole depth of 525 mm.
48105-25-510	Automated Blind Hole Cleaning System for Max. Hole Dia. of 25 mm. and hole depth of 525 mm.