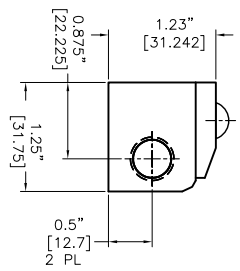
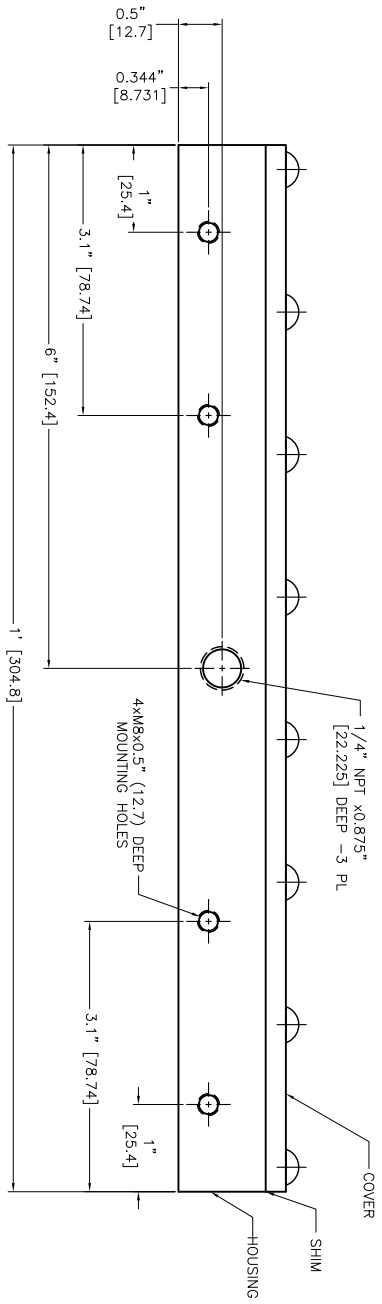
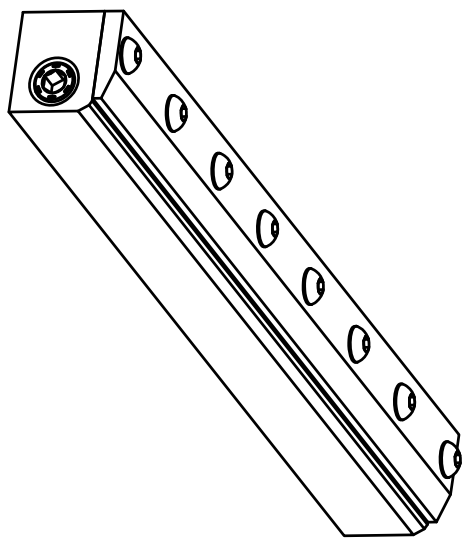
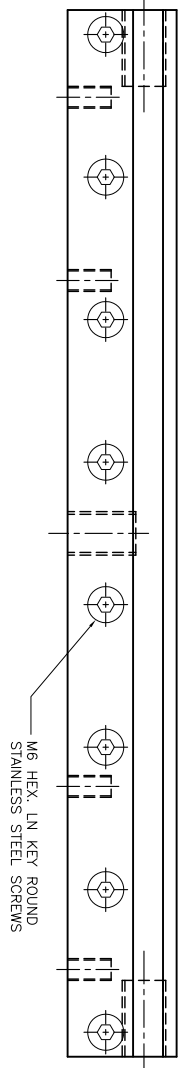


REVISIONS			
REV	DESCRIPTION	DATE	APPROVED
-	-	-	-

- NOTES:
- 1 ALL DIMENSIONS SHOWN ARE FINISH OPERATIONAL DIMENSIONS WHICH INCLUDE RESIDUAL COATINGS UNLESS OTHERWISE SPECIFIED.
 - 2 PART TO BE PACKED PROPERLY TO AVOID ANY DAMAGE WHILE SHIPPING & HANDLING.
 - 3 ALL HORIZONTAL DIMENSIONS ARE SYMMETRICAL ABOUT VERTICAL CENTER LINE UNLESS OTHERWISE SPECIFIED.



REQUIREMENTS-UNLESS OTHERWISE SPECIFIED		CONTRACT NUMBER -	
GENERAL	LIMITS	CLIENT	CONTRACTOR
1. DIMS ARE IN INCHES (MM)	1. LINEAR DIMS. 300" = 300	CLIENT	CONTRACTOR
2. ACCORDANCE WITH ANSI Y14.5 (1982)	2. ANGLES = 30°	DESIGN	CHIRIAC'S
3. MACHINE FINISH 125 MICRO INCH RMS	3. ROUNDED TOOTH	DATE	03/09/2014
4. INTERNAL RADI R015	4. HOLES IN ACCORDANCE WITH AND 10387	CREATED	ASHISH
5. BREAK SHARP CORNERS 0.05 TO 015		PROJECT	O.A.
		MANUFACTURING	
		THERMAL	
		ELECTRICAL	
		MECHANICAL	
		SCALE	C
		CAD NO	SAK-12
		SHEET	1 OF 1
		REV	P 1

5 4 3 2 1

A B C D

A B C D

NEX FLOW AIR PRODUCTS CORP.
 10820 YONCE STREET UNIT 359-220 RICHMOND HILL, ON L4C 3G7
 TEL.: (416) 410-3113 & FAX: (416) 410-1806 www.nex-flow.com

12" STANDARD AIR BLADE AIR KNIFE OUTLINE DRAWING OF