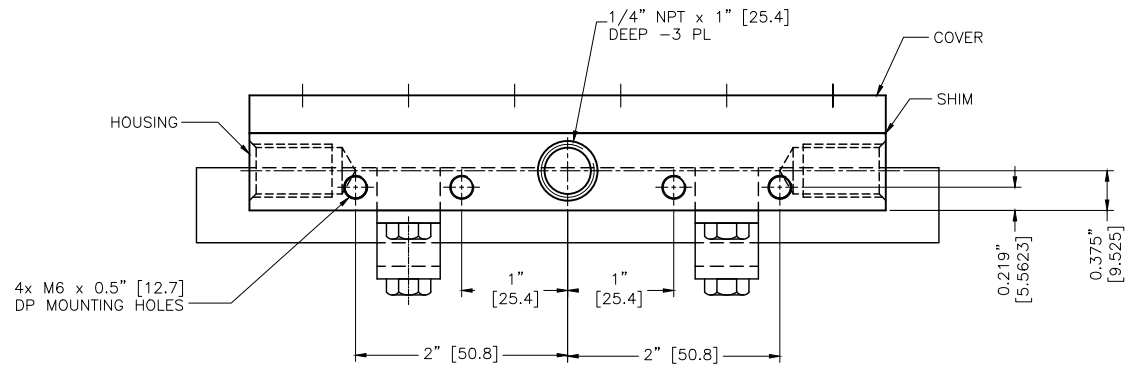
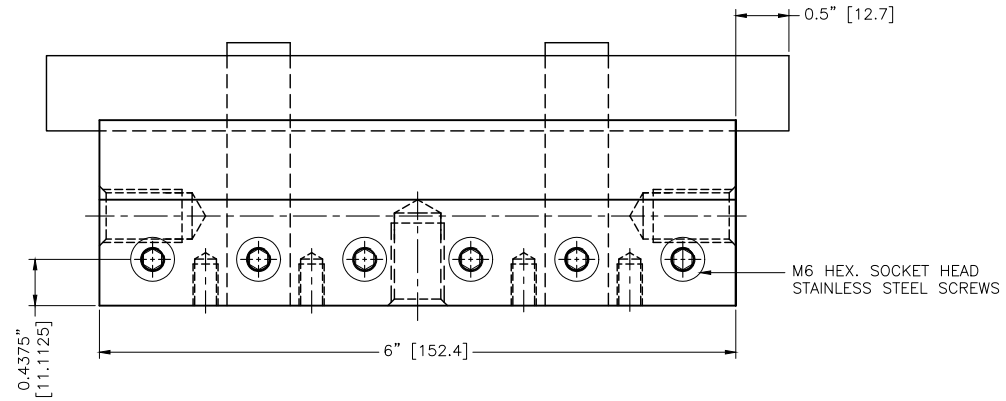
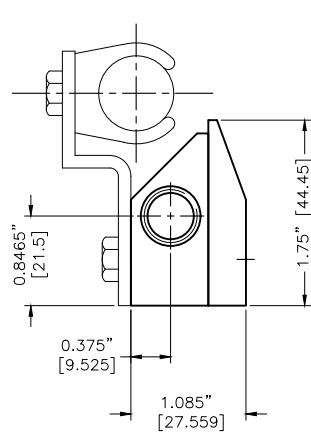


8 7 6 5 4 3 2 1

NOTES:

- 1 ALL DIMENSIONS SHOWN ARE FINISH OPERATIONAL DIMENSIONS WHICH INCLUDE RESIDUAL COATINGS UNLESS OTHERWISE SPECIFIED.
- 2 PART TO BE PACKED PROPERLY TO AVOID ANY DAMAGE WHILE SHIPPING & HANDLING.
- 3 ALL HORIZONTAL DIMENSIONS ARE SYMMETRICAL ABOUT CENTER LINE UNLESS OTHERWISE SPECIFIED.



THIRD ANGLE PROJECTION	REQUIREMENTS-UNLESS OTHERWISE SPECIFIED				CONTRACT NUMBER	NEX FLOW AIR PRODUCTS CORP.								
	GENERAL				CLIENT	10520 YONGE STREET, UNIT 358-220, RICHMOND HILL, ON L4C 3C7								
MATERIAL	1. DIMS ARE IN INCHES (MM)				CONTRACTOR	TEL.: (416) 410-1313 & FAX: (416) 410-1806 www.nex-flow.com								
	2. DIMENSIONING AND TOLERANCING IN ACCORDANCE WITH ANSI Y14.5 (1982)				DATE	TITLE								
	3. MACHINE FINISH 125 MICRO INCH RMS				S.PATIL	27/11/2013								
	4. INTERNAL RADI .015				DESIGN	CHECKED								
	5. BREAK SHARP CORNERS .005 TO .015				ASHISH	G.A.								
FINISH	LIMITS				PROJECT	-								
	1. LINEAR DIMS				STRESS	MANUFACTURING								
.000				MANUFACTURING	SIZE	CAGE CODE								
.010				MANUFACTURING	SIZE	---								
.030				MANUFACTURING	SIZE	---								
2. ANGLES = ± 1/2"				MANUFACTURING	SIZE	---								
3. RUNOUT .010 THR				MANUFACTURING	SIZE	---								
4. HOLES IN ACCORDANCE WITH AND 10387				MANUFACTURING	SIZE	---								
PART NO				MECHANISM	ELECTRICAL	SCALE	1:1		CAD NO	XAKI-6	SHEET	1	OF	1

8 7 6 5 4 3 2 1